



Visit our website
WWW.JETDEVIE.COM

Your Inquiries are welcome at:
SALES@JETDEVIE.COM

INTRODUCTION

JDV was founded in Israel and takes its origins back in 2000's. Our brand focuses on the advanced serums applied by needle-less mesotherapy systems. Today, JDV treatments are well known by professionals using needle-less mesotherapy systems and by customers around the world! More than 10,000 professionals and millions of their customers are using JDV! Over the years we developed products that improve skin health, and deliver long-lasting aesthetic results: rejuvenation, texture, deep hydration, acne, whitening, and more... Thanks to immediate visible result JDV treatment became a life-style for Hollywood stars, as well as for anyone who seeks healthy and younger skin appearance instantly!



Contents

| | |
|---|----------------|
| • Peeling Line | 03 - 08 |
| • Bio-Rejuvenation Line | 09 - 14 |
| • Functional Line | 15 - 16 |
| • Technology | 17 - 18 |
| • Hand-piece | 19 - 20 |
| • Instructions & Protocols | 21 - 26 |

4 STEPS. 40 MINUTES.

BEST SKIN, BETTER...



• **STEP 01 - Lymphatic Drainage**

A specialized and relaxing massage intended for detoxifying the skin and stimulating micro-circulation

• **STEP 02 - Exfoliation**

Removing dead skin cells and prepares the skin to receive the nourishment from the following Infusion step

• **STEP 03 - Infusion**

Effective and deep delivery of active ingredients into the skin

• **STEP 04 - Booster Infusion**

This is a further infusion step to be added in order to boost the treatment result

PEELING LINE



Jet-De-Vie Peeling Line provides a high-impact line of serums, specifically targeted for different levels of chemical exfoliation:

LIGHT, MILD, MEDIUM AND STRONG.

Jet-De-Vie Peeling serums provide the right means to exfoliate effectively and never aggressively.

SUITABLE FOR FACE, CHIN, NECK & DÉCOLLETÉ, HANDS, BREAST, ARMS & THIGHS



USE AND ACTION

With the novel multifunctional Pure Detox Complex, the practitioner can perform a deeply detoxifying lymphatic drainage prior to peeling and infusion. Thanks to the aloe barbadensis and silver oxide added to the formula, Pure Detox Complex allows for a very deep cleansing, and an anti-bacterial and a purifying action.

Pure Detox Complex was developed for both very delicate peelings (when the skin is extremely delicate and the use of glycolic acid is not suitable) and to neutralize and wash off the glycolic acid residues after a chemical peeling. Hyaluronic acid enhances hydration and leave the skin smooth, aloe provides calming and healing benefits and silver oxide detoxifies.

MAIN ACTIVE INGREDIENTS

It has been shown that the skin can absorb the key ingredients of Aloe up to seven layers deep. Thanks to this attribute, aloe effectively stimulates proteolytic enzyme action and fibroblast activity in skin tissue. Because of this enzymatic breakdown of dead skin cells, aloe is an excellent cleansing and detoxifying agent with an ability to remove dead skin cells and toxins while purifying the pores. It also has antimicrobial properties targeted against many common bacteria and fungi. It soothes and moisturizes the skin and serves as an anti-inflammatory agent as it has burn healing, scar reducing, and wound healing properties.

• Silver Oxide

Its properties consist of a great bactericidal, antifungal, antiviral effects in addition to its ability to reactivate tissue metabolism. Many studies have demonstrated its efficacy in the treatment of dermatitis, burns, warts, wounds, acne, and eczema.

• Hyaluronic Acid

The formula also contains hyaluronic acid that improves hydration and gives the skin an immediate silk-touch effect.

PURE DETOX COMPLEX

SOOTHING & PURIFYING SOLUTION

- SALINE SOLUTION 0.3%
- ALOE BARBADENSIS
- SILVER OXIDE
- HYALURONIC ACID
- SUPPORTING INGREDIENTS

CODE: JDV-DS1

AREAS

FACE
CHIN, NECK & DÉCOLLETÉ
HANDS & BREAST
ARMS & THIGHS

PROTOCOLS & INDICATIONS

LYMPHATIC DRAINAGE VERY DELICATE EXFOLIATION GLYCOLIC ACID CLEANING

SENSE-PEELING COMPLEX

MANDELIC & SALICYLIC

- MANDELIC ACID
- SALICYLIC ACID
- SUPPORTING INGREDIENTS

CODE: JDV-PC12
1 VIAL CONTAINING 50 ML

AREAS

FACE
CHIN, NECK & DÉCOLLETÉ
HANDS & BREAST
ARMS & THIGHS

PROTOCOLS & INDICATIONS

GENTLE EXFOLIATION FOR SENSITIVE TO NORMAL SKIN ESPECIALLY DEVELOPED FOR:
GLOWING SUMMER PEELING ACNE-PRONE & OILY SKIN

USE AND ACTION

Soft Peeling Complex is our product of choice for a deep yet very gentle exfoliation for sensitive skin. It is the product to prefer during summer months since the active ingredients do not react with light and sun protection is not needed after treatment. After exfoliation with Soft Peeling Complex, the practitioner proceeds directly to infusion, without the need to wash off the product. The active ingredients in this formula remain active and continue their gentle exfoliating activity in the hours following the session.

MAIN ACTIVE INGREDIENTS

• Mandelic Acid

With Mandelic Acid as a main ingredient, Soft Peeling Complex is highly recommended for patients with sensitive skin who tend to suffer from irritation. In some cases, irritation can stimulate pigment-producing cells to produce more melanin, especially amongst those with a darker complexion. This is not likely to occur with mandelic acid. Because of its gentle properties, mandelic acid is the most recommended exfoliant for patients suffering from rosacea. Its antibacterial properties are also very helpful in treating acne as it regulates sebum production.

• Salicylic Acid

This multifunctional ingredient addresses many of the systemic causes of acne. Salicylic acid's primary beneficial use is as an exfoliant helping to shed the unhealthy build-up of dead skin due to sun damage, aging, and the abnormal build-up of oil and dead surface cells for those with acne, congested pores, and oily skin. Salicylic acid exfoliates in a natural, gentle manner similar to how skin is able to exfoliate in a young person. It also helps unclog pores to resolve and prevent lesions.



USE AND ACTION

A new formulation with 5% glycolic acid combined with soothing and repairing ingredients, Bright Peeling Complex is perfect for light to medium exfoliations. It is particularly recommended for sensitive to normal skin types to achieve an effective full-area exfoliation that will leave the skin clean and bright. It is also recommended for specific areas that suffer from hyperpigmentation and sun or age spots.

Bright Peeling Complex provides a good exfoliation results on acne-prone and oily skins as well. Remember to wash off residues of Bright Peeling Complex with Pure Detox Complex after this stage of the treatment prior to moving on to the next one. It is recommended to avoid direct sun exposure and to apply sun screen lotion for one day after the treatment.

MAIN ACTIVE INGREDIENTS

• Glycolic Acid

Bright Peeling Complex contains a concentration of 5% glycolic acid at pH 3.3. As an exfoliant, it helps shed dead skin layers and renew the skin's surface, to visibly soften age signs, particularly those caused by sun damage. After an exfoliation with Bright Peeling Complex, the skin is deeply cleansed, brighter, and ready to receive the nutrition that will be provided by the following infusion of active ingredients, as chosen by the practitioner based on the patient's needs.



• Vitamin B5 & Aloe Vera

Bright Peeling Complex is enriched with soothing aloe Vera and Vitamin B5, which are effective in preventing excessive redness. These two ingredients considerably lower the typical itching sensation of glycolic acid, making this step of exfoliation a pleasant and calming experience.

SOFT PEELING COMPLEX

GLYCOLIC ACID 5%

- GLYCOLIC ACID 5%
- 5% GLYCOLIC ACID
- SUPPORTING INGREDIENTS

CODE: JDV-PC9
1 VIAL CONTAINING 50 ML

AREAS

FACE
CHIN, NECK, HANDS
ARMS & THIGHS

PROTOCOLS & INDICATIONS

LIGHT TO MEDIUM EXFOLIATION ESPECIALLY DEVELOPED FOR:
STANDARD EXFOLIATION
HYPERPIGMENTATION SUN & AGE SPOTS ACNE-PRONE & OILY SKIN

BRIGHT PEELING COMPLEX

GLYCOLIC ACID 10%

• 10% GLYCOLIC ACID
SUPPORTING INGREDIENTS

CODE: JDV-PC10
1 VIAL CONTAINING 50 ML

AREAS

FACE
CHIN, NECK & DÉCOLLETÉ
HANDS, ARMS
& THIGHS

PROTOCOLS & INDICATIONS

STANDARD EXFOLIATION MEDIUM
TO STRONG EXFOLIATION VERY
STRONG EXFOLIATION FOR NON-
SENSITIVE SKINS ESPECIALLY
DEVELOPED FOR:
HYPERPIGMENTATION SUN & AGE
SPOTS ACNE-PRONE & OILY SKIN

USE AND ACTION

This formulation of 10% glycolic acid, in combination with soothing and repairing ingredients, was developed for medium to strong exfoliations. It is particularly recommended for use on sensitive and thin skin, with emphasis on areas suffering from hyperpigmentation and sun or age spots, to achieve a full-area exfoliation that leaves the skin clean and bright.

Exfoliating with Bright Peeling Complex provides great results on acne-prone and oily skins as well. Remember to wash off residues of Bright Peeling Complex with Pure Detox Complex after this stage of the treatment prior to moving on to the next one. It is recommended to avoid direct sun exposure and apply sun screen lotion for one day after the treatment.

MAIN ACTIVE INGREDIENTS

• Glycolic Acid

Bright Peeling Complex contains a concentration of 10% glycolic acid at pH 3.3. As an exfoliant, it helps shed dead skin layers and renew the skin's surface, to visibly soften age signs, particularly those caused by sun damage. After an exfoliation with Bright Peeling Complex, the skin is deeply cleansed, brighter, and ready to receive the nutrition that will be provided by the following infusion of active ingredients, as chosen by the practitioner based on the patient's needs.

• Supporting Ingredients

Bright Peeling Complex, like Bright Peeling Complex, is enriched with supporting ingredients. These ingredients considerably lower the typical itching sensation of glycolic acid, making this step of exfoliation a pleasant and calming experience.



USE AND ACTION

This formulation of 16% glycolic acid, in combination with soothing and repairing ingredients, was developed for medium to strong exfoliations. It is particularly recommended for use on thick and resistant skins, with emphasis on areas suffering from hyperpigmentation and sun or age spots, to achieve a full-area exfoliation that leaves the skin clean and bright.

Exfoliating with Deep Peeling Complex provides great results on acne-prone and oily skins as well. Remember to wash off residues of Deep Peeling Complex with Pure Detox Complex after this stage of the treatment prior to moving on to the next one. It is recommended to avoid direct sun exposure and apply sun screen lotion for two days after the treatment.

MAIN ACTIVE INGREDIENTS

• Glycolic Acid

Deep Peeling Complex contains a concentration of 16% glycolic acid at pH 3.3. As an exfoliant, it helps shed dead skin layers and renew the skin's surface, to visibly soften age signs, particularly those caused by sun damage. After an exfoliation with Deep Peeling Complex, the skin is deeply cleansed, brighter, and ready to receive the nutrition that will be provided by the following infusion of active ingredients, as chosen by the practitioner based on the patient's needs.



• Supporting Ingredients

Deep Peeling Complex, like Bright Peeling Complex, is enriched with supporting ingredients. These ingredients considerably lower the typical itching sensation of glycolic acid, making this step of exfoliation a pleasant and calming experience.

DEEP-PEELING COMPLEX

GLYCOLIC ACID 16%

• 16% GLYCOLIC ACID
SUPPORTING INGREDIENTS

CODE: JDV-PC11
1 VIAL CONTAINING 50 ML

AREAS

FACE
CHIN, NECK & DÉCOLLETÉ
HANDS
ARMS & THIGHS

PROTOCOLS & INDICATIONS

MEDIUM TO STRONG EXFOLIATION
VERY STRONG EXFOLIATION FOR
NON-SENSITIVE AND FOR THICK
SKINS ESPECIALLY DEVELOPED FOR:
HYPERPIGMENTATION SUN & AGE
SPOTS ACNE-PRONE & OILY SKIN

BIO-REJUVENATION LINE



Jet-De-Vie Bio-rejuvenation is a complete advanced line of serums specifically targeted for the following anti-aging treatments:

REJUVENATION, LINES & DEEP WRINKLES, TONING, YOUNGER SKIN PRESERVATION AND OXIDIZED SKIN

It's the safe and effective alternative to Botulinum Toxin A and bio-revitalizing injections.

SUITABLE FOR FACE, CHIN, NECK & DÉCOLLETÉ, HANDS, BREAST, SCALP AND ARMS & THIGHS.



USE AND ACTION

The basis for most Bio-Rejuvenation treatments, Deep Wrinkle Complex can be used as part of any anti-aging protocol, whether alone or alternated, session by session, with a different anti-aging complex (see the Skin Care Protocols section).

The Deep Wrinkle Complex formula contains hyaluronic acid and bio-peptides. The hyaluronic acid with strong water retention power, seamlessly reducing water vaporization from the skin and deeply enhancing hydration, tone, and texture. The dipeptide diaminobutyroyl improve the skin's natural biological processes to reverse its aging and enrich the formula for a longer lasting anti-aging effect. The particular combination of these two premium active ingredients produces a superior lift-up and silk touch effect.

The basis for most Bio-Rejuvenation treatments, Deep Wrinkle Complex can be used as part of any anti-aging protocol, whether alone or alternated, session by session.

MAIN ACTIVE INGREDIENTS



• Hyaluronic Acid

As the chief glycosaminoglycan in skin, hyaluronic acid works to keep every aspect of the skin stable, safeguarded, and constantly renewed. It has the stunning capacity to attract and hold vast amounts of moisture – it enhances moisture content and revitalizes skin's outer layers, so skin looks and feels softer, smoother, and, especially, radiantly hydrated. It instantly improves the appearance of fine lines and wrinkles.

DEEP WRINKLE COMPLEX

HYALURONIC ACID

• HYALURONIC ACID

CODE: JDV-AA5
1 VIAL CONTAINING 50 ML

AREAS

FACE
CHIN, NECK & DÉCOLLETÉ
HANDS & BREAST
ARMS & THIGHS

PROTOCOLS & INDICATIONS

ANTI-AGING GOLDEN STANDARD
VIP SINGLE TREATMENT (BEFORE
SPECIAL EVENT) YOUNGER SKIN
PRESERVATION YOUNG STRETCH-
MARKS DEEP HYDRATION LIFT-UP &
SILK-TOUCH EFFECT

CELL REGENERATION COMPLEX

VITAMIN A&E WITH VEGETAL STEM CELLS

- VITAMIN A&E
 - VEGETAL STEM CELLS
- CODE: JDV-AAS**
1 VIAL CONTAINING 50 ML

AREAS

FACE
CHIN, NECK & DÉCOLLETÉ
HANDS & BREAST
ARMS & THIGHS

PROTOCOLS & INDICATIONS

ANTI-AGING GOLDEN STANDARD
VIP SINGLE TREATMENT (BEFORE
SPECIAL EVENT) YOUNGER SKIN
PRESERVATION COLLAGEN
STIMULATION LIFT-UP EFFECT

USE AND ACTION

Cell Regeneration Complex is the perfect complementary component to Deep Wrinkle Complex. While Deep Wrinkle Complex targets deep hydration and tightening, which is the first stage in treating aging skin, Cell Regeneration Complex significantly stimulates cellular regeneration. It is enriched with well-known anti-aging ingredients such as buddleja davidii extract, thymus, watermelon, rice bran protein, soybean protein and helianthus annuus seed oil. Some of the active ingredients are purposefully formulated in smaller sized molecules for better penetration and retention.

MAIN ACTIVE INGREDIENTS

• Vitamin A

Facilitating communication between cells, Vitamin A encourages aging cells to continue their renewal process, and regenerate collagen and elastin to prevent the appearance of aging skin, wrinkles and fine lines. The small molecular structure of Vitamin A contained in this complex facilitates its penetration into the outer layers of the skin allowing it to work to repair the lower layers where collagen and elastin reside

• Vitamin E

As an antioxidant superstar, Vitamin E reduces the formation of free radicals from exposure to UV rays, promoting a healing process, strengthening the skin's barrier function, protecting the lipid balance of the skin's barrier, and reducing trans-epidermal water loss. Vitamin E helps improve the overall appearance of the skin, plus it decreases inflammation and boosts the production of new cells.



USE AND ACTION

Repair & Firming Complex is the serum of choice to achieve the best tightening effect with deep hydration. It can be used in all sessions of the protocol, or can be alternated with Deep Wrinkle Complex. For use on sensitive and irritated skin Repair & Firming Complex is also a preferable choice.

Repair & Firming Complex is a preferred product for body, hands, neck, and breast. In addition to vitamin B5, the formula is enriched with a number of other active ingredients such as glycosaminoglycans, rice bran protein, buddleja davidii extract, watermelon, and citrulline.

MAIN ACTIVE INGREDIENTS

• Vitamin B5

Already naturally present in all living cells, Vitamin B5 is one of the best ingredients for skin care as it offers a remarkable tightening and permeating action. Upon application to the skin, it is readily absorbed into the lower layers, deeply nourishing and toning the tissues. As a humectant with high hydrating power, it stabilizes the skin barrier function, reducing the amount of water loss. It is also ideal for the treatment of dry, scaly, or rough skin. By jetting Vitamin B5, you'll deeply improve the skin's hydration, softness, and elasticity.



REPAIR & FIRMING COMPLEX

• TONE & TIGHTENING

- VITAMIN B5

CODE: JDV-AA7
1 VIAL CONTAINING 50 ML

AREAS

FACE
CHIN, NECK &
DÉCOLLETÉ BREAST
HANDS, ARMS
& THIGHS

PROTOCOLS & INDICATIONS

ANTI-AGING GOLDEN STANDARD
VIP SINGLE TREATMENT (BEFORE
SPECIAL EVENT) FACE TIGHTENING
HANDS TIGHTENING CHIN, NECK &
DÉCOLLETÉ TIGHTENING ARMS AND
THIGHS TONING & TIGHTENING
BREAST TONING & TIGHTENING
FIRMING & LIFT-UP EFFECT

COLLAGEN DETOX COMPLEX

VITAMIN C

• VITAMIN C

CODE: JDV-AA6

1 VIAL CONTAINING 50 ML

AREAS

FACE

CHIN, NECK & DÉCOLLETÉ
HANDS & BREAST
ARMS & THIGHS

PROTOCOLS & INDICATIONS

ANTI-AGING GOLDEN STANDARD
VIP SINGLE TREATMENT (BEFORE
SPECIAL EVENT) HYDRATING AND
ANTIOXIDANT ACNE-PRONE & OILY
SKIN BRIGHTENING AND SUN & AGE
SPOTS COLLAGEN PRODUCTION
STIMULATION

USE AND ACTION

Collagen Detox Complex infusion is highly recommended to brighten skin up and to improve hyperpigmentation and sun & age spots. It is also an excellent product for younger skins suffering from acne and an excellent antioxidant product. Especially formulated Vitamin C in Collagen Detox Complex plays a critical role in the maintenance of a normal mature collagen network, lightens up dark skin, improves spots, and controls the formation of senile keratosis.

MAIN ACTIVE INGREDIENTS

• Vitamin C

Oxidative stress occurs when the cells of the body sustain permanent damage due to highly reactive particles known as free radicals. Contained in sunlight and in elements in the atmosphere, free radicals are constantly acting on the body, producing microscopic amounts of damage. Over time, this damage accumulates, leading to the development of signs of aging. One of the key benefits of Vitamin C is its ability to limit oxidative stress.



CHOOSE YOUR GLOW!

INTRODUCING JDV SERUMS, THE COMPLETE SKINCARE REGIMEN FOR
GLOWING, HEALTHY SKIN.

FUNCTIONAL PRODUCTS LINE

JET-DE-VIE Functional provides a line of serums that target very specific indications:



MASK UNDER COMPLEX was designed to treat skin issues caused by prolonged contact to PPE and mask wearing leading to a number of recognized skin problems including:

- Pressure Injury
- Contact dermatitis or eczema
- Pressure urticaria (or "hives")
- Itch
- Exacerbation of acne



USE AND ACTION

JDV Mask Under Complex is a functional serum which helps stimulate cell renewal and collagen production, particularly indicated for irritated, sun damaged and sensitive skin. It is suggested to add the infusion of JDV Mask Under Complex at the end of a complete treatment to further improve the treatment results.

Containing a combination of ingredients specifically targeted for improving sebo-regulation, acting against bacterial and fungal pathogens and having a healing effect, the Mask Under Complex is the most indicated product for re-establishing the physiological balance in irritation-prone skin.

MAIN ACTIVE INGREDIENTS

• Aloe Barbadensis Leaf Juice

Barbadensis Leaf Juice exerts a healing action. It stimulates the formation of fibroblasts and connective tissue, thereby promoting wound repair and the growth of skin repair process. It is important to underline Aloe's remarkable action against many common bacterial and fungal skin pathogens and its importance as an antiseptic power.

• Vitamin A

Facilitating communication between cells, Vitamin A encourages aging cells to continue their renewal process, and regenerate collagen and elastin to prevent the appearance of aging skin, wrinkles and fine lines. The small molecular structure of Vitamin A contained in this complex facilitates its penetration into the outer layers of the skin allowing it to work to repair the lower layers where collagen and elastin reside

• Vitamin E

As an antioxidant superstar, Vitamin E reduces the formation of free radicals from exposure to UV rays, promoting a healing process, strengthening the skin's barrier function, protecting the lipid balance of the skin's barrier, and reducing trans-epidermal water loss. Vitamin E helps improve the overall appearance of the skin, plus it decreases inflammation and boosts the production of new cells.

MASK UNDER COMPLEX

LMW ALOE BARBADENSIS LEAF JUICE

CODE: JDV-FL 15
1 VIAL CONTAINING 50 ML

AREAS

**FACE
CHIN, NECK & DÉCOLLETÉ**

PROTOCOLS & INDICATIONS

FOR IRRITATED AND DELICATE SKINS
HYDRATING AND ANTIOXIDANT
SOOTHING

THE DEVICE - JETPOWER



JETPRO-V & JETPRO-VRF

The specialized device we offer is a vital part of the JDV concept. The Jetpower device was carefully designed and made for convenient operation, enhancing of the customer experience and top-notch results. The Jet-de-Vie (JDV) concept for the trans-dermal delivery of specialized serums in a clinically safe and effective manner has the unique combination of specialized device, hand-piece and exclusively formulated serums. This allows the subsonic aerosol stream of micro-droplets to stretch the skin, while temporarily opening the micro-channels. The combination of high speed, small droplet size and opening micro-channels facilitates the comfortable, painless and effective transdermal delivery without use of needles. Hence we coined a new term "Needleless Mesotherapy".

The unique concept of JDV truly delivers immediate and long-lasting results in a safe and painless manner without any downtime.



THE DEVICES ARE A VITAL PART OF THE JDV CONCEPT. OUR DEVICES DESIGNED FOR THE BEST CUSTOMER EXPERIENCE AND RESULTS

JETPRO-V

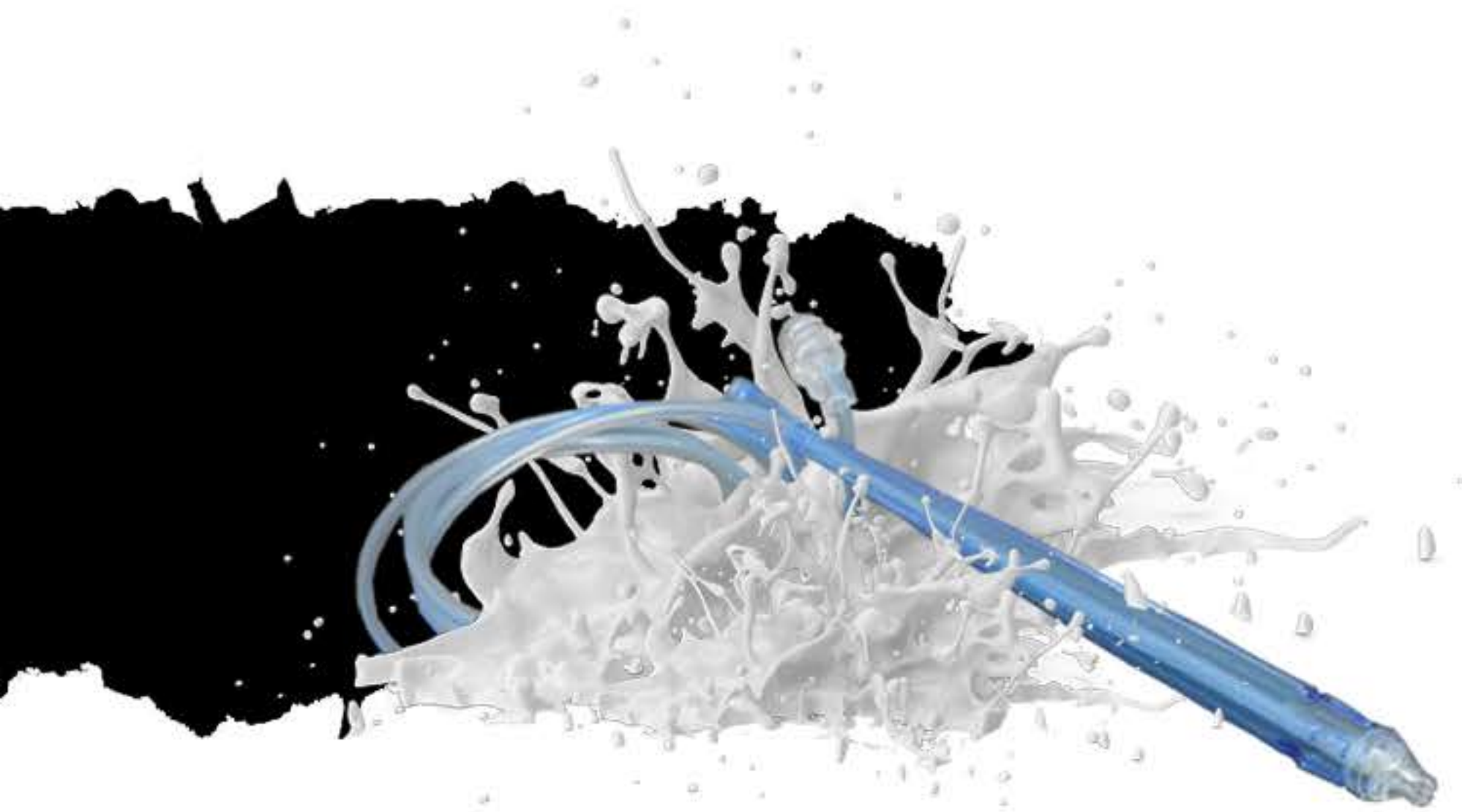
JDV Serums transdermal delivery with NO injections. JETPRO-V is the most advanced needle-less delivery system on the market.

JETPRO-VRF

Unique combination of Radio Frequency & Jet Technology increasing skin permeability for an optimal absorption of nutrients. Radio Frequency (RF) Targeting new formation of **AQUAPORINS, COLLAGEN AND ELASTIN**

| |  JETPRO-V |  JETPRO-VRF |
|---|--|--|
| JET HYDROPORATION TREATMENT AREAS BODY, FACE, LIPS & EYES, SCALP, FEET & HANDS | ✓ | ✓ |
| TECHNICAL SPECS PRESSURE 90 PSI, SPEED 220 M / SEC, DROPLET SIZE 5-20 MQ | ✓ | ✓ |
| LIQUID SOURCE JDV SOLUTION CONTAINER | ✓ | ✓ |
| COMFORT & MOBILITY TOUCH SCREEN CONTROL, NOISE ISOLATION, INTEGRAL BASE-WHEELS | ✓ | ✓ |
| RADIO FREQUENCY SPEC CAPACITIVE MONOPOLAR & BIPOLAR RF, 91 PREDEFINED MODES, CERAMIC RF HANDPIECES | | ✓ |
| COMBINED HYDROPORATION & RF 30% QUICKER RESULT, 50% BETTER RESULT BETTER PERMEABILITY, BETTER CONDUCTIVITY | | ✓ |
| ADDITIONAL TREATMENT POSSIBILITIES BODY CONTOURING & CIRCUMFERENTIAL REDUCTION, SKIN TIGHTENING | | ✓ |

THE HAND-PIECE



DEEPER, SAFER, MORE

The innovative hand-piece we offer is one of the secrets behind the efficacy of the JDV concept. This hand-piece is able of trans-dermal delivery of JDV specialized serums in clinically safe and effective manner. The unique design allows the subsonic aerosol stream of micro-droplets to stretch the skin, while temporarily opening the micro-channels. The combination of high speed, small droplet size and opening micro-channels facilitates the comfortable, painless and effective transdermal delivery without use of needles. Hence we coined a new term "Needleless Mesotherapy".

JDV unique concept truly delivers immediate and long lasting results in safe and painless manner without any downtime!

IT'S NOT A MAGIC, IT'S OUR TECHNOLOGY

The combination of high speed small droplet size and opening micro-channels results in painless and effective transdermal delivery.

BEST TECHNOLOGY FOR YOUR BEST SKIN

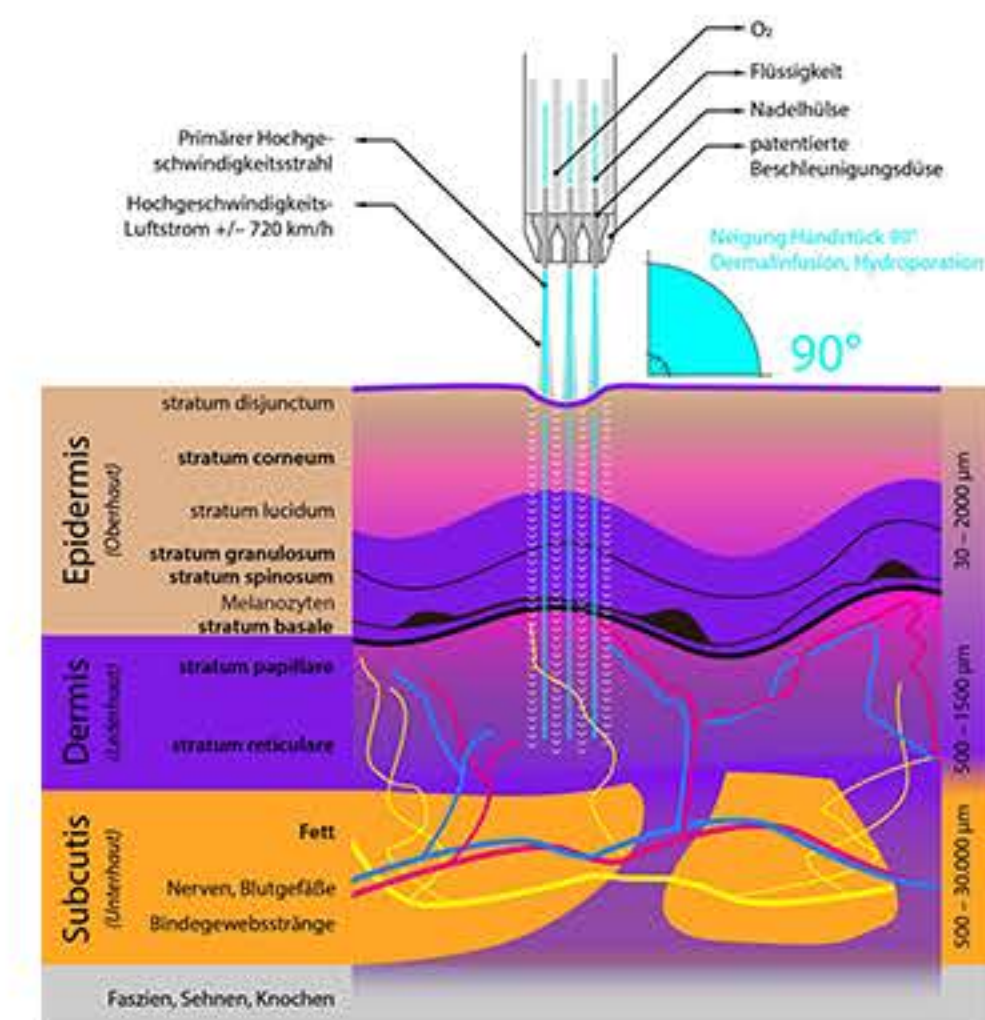
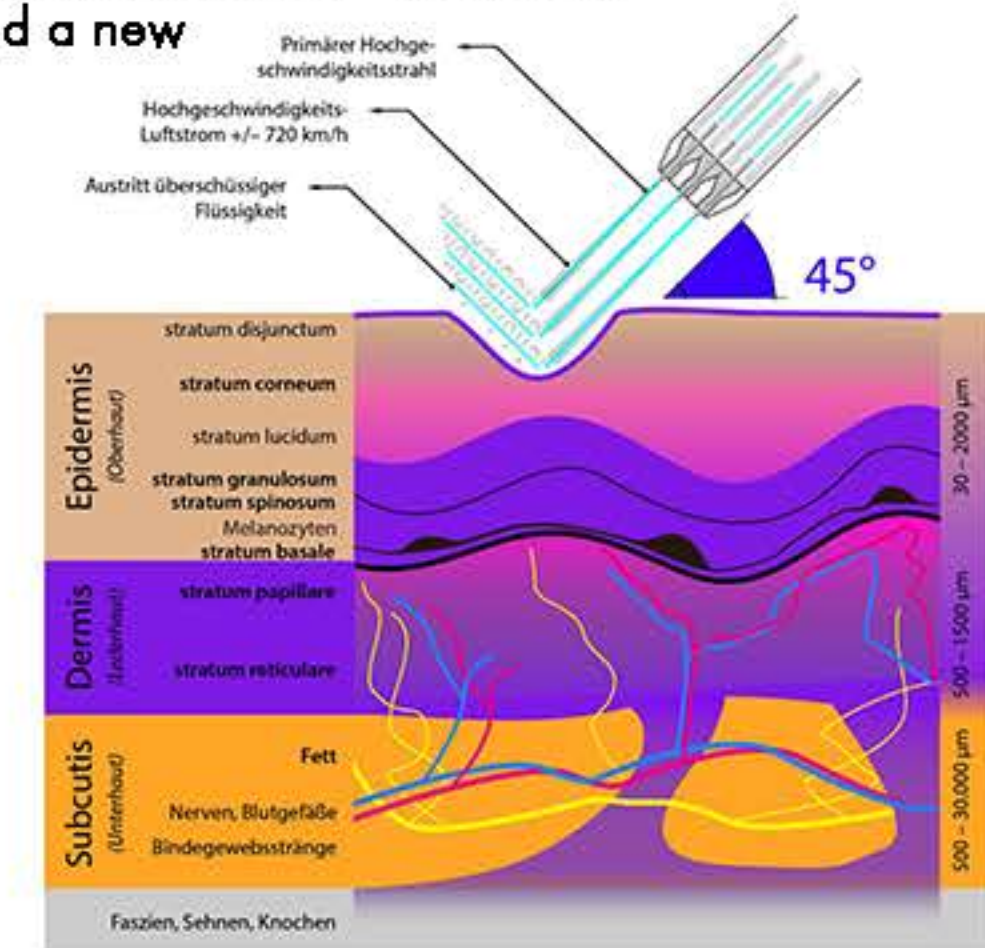
The innovative hand-piece we offer is able of trans-dermal delivery of JDV specialized serums in clinically safe and effective manner.

NEEDLELESS MESOTHERAPY

The combination of high speed, small droplet size and briefly opening micro-channels facilitates the comfortable, painless and effective transdermal delivery without use of needles. Hence we coined a new term "Needleless Mesotherapy".

HYDRO EXFOLIATION

Safe, painless & contactless way to cleanse and extract the skin. During this stage the dead cells are been removed and the skin prepared to receive nourishment in the transdermal delivery stage



TRANSDERMAL DELIVERY

Traveling at the speed of 220 m / sec the jet streams gently open up micro-channels that lead into the deeper skin layers. Using Jet-de-Vie serums designed to treat various skin conditions, the jet streams contain nutritive micro-droplets that penetrate below the skin surface and act on the sub-dermal layers to provide visible, instant and long lasting results.

PEELING PROTOCOLS

| PROTOCOL NAME | INDICATION | PRODUCT TO USE | HOW TO DO |
|--|--|--|--|
| A Very Delicate Exfoliation | It is the lightest exfoliation. A delicate cleaning recommended for very young and /or for extremely sensitive skins | Pure Detox Complex. | Use the needed quantity of product to exfoliate (at a 45° angle). After exfoliation proceed immediately with the infusion of the chosen Solution |
| B Gentle Exfoliation W. Mandelic acid | A mild and gentle exfoliation performed with Mandelic, Salicylic and Malic Acid. Recommended for medium- sensitive skins or to be alternated, session by session, with the Glycolic Acid | Soft Peeling Complex | Use 4 ml of product to exfoliate (at a 45° angle). After exfoliation proceed immediately with the infusion of the chosen solution without washing |
| A Standard Exfoliation W. Glycolic acid | A basic exfoliation performed with 5% or 10% Glycolic Acid*. Recommended for normal skins | Soft Peeling Complex Or Bright Peeling Complex | Use 4 ml of product to exfoliate (at a 45° angle). After exfoliation wait 3 to 5 minutes (or more if the skin is resistant) and then make the same exfoliation with Pure Detox Complex to wash-off the residual material |
| D Medium-strong Exfoliation W. Glycolic acid | A medium-strong exfoliation performed with either 10% or 16% Glycolic Acid. Recommended for thick and resistant skins that need a deep exfoliation | Soft Peeling Complex | Use 4 ml of product to exfoliate (at a 45° angle). After exfoliation proceed immediately with the infusion of the chosen solution without washing |
| E Very strong Exfoliation W. Glycolic acid | A very strong exfoliation performed with Glycolic Acid. Recommended for thick and very resistant skins that need an extremely deep exfoliation | Soft Peeling Complex Or Bright Peeling Complex | Exfoliate very deeply with Pure Detox Complex (at a 45° angle), then proceed with the chosen Glycolic Acid (4ml) (at a 90° angle). After waiting for two hours wash the skin properly. Make sure that the patient applies a strong sun protection after the treatment and also the day after and avoids direct sun exposure for two days |

SKIN CARE PROTOCOLS

| PROTOCOL NAME | INDICATION | PRODUCT TO USE FOR EXFOLIATION | PRODUCT TO USE FOR INFUSION | FINISH | NUMBER OF TREATMENTS (PACKAGE) |
|---|--|---|-------------------------------------|-----------------------------|--|
| ANTI-AGING GOLDEN STANDARD | All skin conditions | Pure Detox Solution + GA 5% (GA 10% once a month) + After 5-10 minutes wash with Pure Detox Solution | Choose 1 of 4: HA / VC / B5 / A & E | Hydration Mask SPF cream | Package of 4 to 8 weekly treatments + Maintenance treatments once a month |
| VIP SINGLE TREATMENT (BEFORE SPECIAL EVENT) | All skin conditions | Pure Detox Solution + GA 5% or GA 10% + After 5-10 minutes wash with Pure Detox | Choose 1 of 3: HA / VC / B5 | A&E infusion SPF cream | Single treatment |
| WHITENING | Dark skin Pigmentation Sun tanned skin | Pure Detox Solution + GA 5% or Mandelic & Salicylic | VC infusion | Hydration Mask SPF cream | Package of 6 to 10 treatments + Maintenance treatments upon need |
| ACNE | Acne | Pure Detox Solution + GA 5% (GA 10% once a month) | Choose 1 of 2: VC / B5 | A&E infusion SPF cream | Package of 3 weekly treatments + Maintenance treatments upon need |
| SPECIALIZED FUNCTIONAL TREATMENTS | | | | | |
| FACE NEW LIFE. | Skin irritation caused by protective mask | Pure Detox Solution + (optional) Mandelic & Salicylic | Choose 1 of 2: VC / HA | B5 infusion | Package of 4 to 8 weekly treatments + Maintenance treatments once in 2 weeks |
| LOVE SCALP - LOVE HAIR | Hairloss Dandruff | Pure Detox Solution + GA 5% | B5 infusion | | Package of 8 to 10 weekly treatments + Maintenance treatments once a month |

PROTOCOLS

SKIN CARE PROTOCOLS

| PROTOCOL NAME | INDICATION | PRODUCT TO USE FOR EXFOLIATION | PRODUCT TO USE FOR INFUSION | FINISH | NUMBER OF TREATMENTS (PACKAGE) |
|--|---|---|-----------------------------|-----------------------------|--|
| ANY SPECIFIC AREA OR SKIN PROBLEM? JDY IS HERE FOR YOU WITH PROTOCOLS TO DELIVER: | | | | | |
| CALM | Skin irritation | Pure Detox Solution + (optional) Mandelic & Salicylic | Choose 1 of 2: VC / HA | B5 infusion | Single treatment or Package of 4 to 8 weekly treatments + Maintenance treatments once in 2 weeks |
| BRIGHT | Dark skin Pigmentation Sun tanned skin | Pure Detox Solution + GA 5% or Mandelic & Salicylic | VC infusion | Hydration Mask SPF cream | Single treatment or Package of 6 to 10 treatments + Maintenance treatments upon need |
| EYES | Dull skin Wrinkles | Pure Detox Solution + GA 5% | HA infusion | A&E infusion | Single treatment or Package of 4 to 6 weekly treatments + Maintenance treatments once in 2 weeks |
| LIPS | Dry lips Loss of volume Dull color | None | HA infusion | A&E infusion | Single treatment or Package of 4 treatments + Maintenance treatments once a month |
| TEXTURE & PORES | Enlarged pores Uneven surface Texture improvement | Pure Detox Solution + GA 10% + Pure Detox Solution | A&E infusion | SPF cream | Single treatment or Package of 3 bi-weekly treatments + Maintenance treatments once a month |
| HYDRATE | Dry skin | Pure Detox Solution + GA 5% or Mandelic & Salicylic | HA infusion | A&E infusion | Single treatment or Package of 4 to 8 weekly treatments + Maintenance treatments once in 2 weeks |

SKIN CARE PROTOCOLS

| PROTOCOL NAME | INDICATION | PRODUCT TO USE FOR EXFOLIATION | PRODUCT TO USE FOR INFUSION | FINISH | NUMBER OF TREATMENTS (PACKAGE) |
|-------------------|---------------------|--|--|--------------|--|
| REJUVINATE & FIRM | All skin conditions | Pure Detox Solution + GA 5% or GA 10% + After 5-10 minutes wash with Pure Detox Solution | HA infusion *For follow up treatments: Choose 1 of 3: HA / VC / B5 | A&E infusion | Single treatment or Package of 4 to 8 weekly treatments + Maintenance treatments once in 2 weeks |

| PROTOCOL NAME | INDICATION | PRODUCT TO USE FOR EXFOLIATION | PRODUCT TO APPLY | HOW TO USE | NUMBER OF TREATMENTS |
|--------------------------------|---------------------|--------------------------------|---------------------------------|---|--------------------------------|
| AT HOME MAINTENANCE TREATMENTS | | | | | |
| HOME ALONE | All skin conditions | None | Alternate Bio-Rejuvenation Line | Soak sheet mask with 10-15 ml of product and apply for 20 min | Consult with your practitioner |

INSTRUCTIONS FOR JDV TREATMENT

• STEP 01 - Lymphatic Drainage

Use Pure Detox Complex and keep the hand piece at a 90° angle relative to the skin surface at 4-7 cm distance from it. Repeat each movement three times. Duration of complete lymphatic drainage 10-20 minutes.

• STEP 02 - Exfoliation

Use either Soft / Bright / Deep / Max-Deep Peeling Complex (containing glycolic acid), or Sense Peeling Complex (containing mandelic acid). Keep the hand piece at a 45° angle relative to the skin surface and 8-10 mm distance from it. Move in zigzag motions, covering the entire treatment area.

When exfoliated with glycolic acid, wait 3-5 minutes and then wash with Pure Detox Complex (same hand piece, movements and distance) to wash off the acid. *NO need to wash Sense Peeling Complex.

• STEP 03 - Infusion

Infuse Bio-Rejuvenation solution. Keep the hand piece at a 90° angle relative to the skin surface and keep a 8-10 mm distance from it. Move in slow zigzag motions, covering the entire treatment area. Duration of Infusion: 10-20 minutes, depending on the area.

• STEP 04 - Booster Infusion

If Cell Regeneration Complex was NOT already infused during the 3rd step. As Booster Infusion use Cell Regeneration Complex, or Functional Line Mask Under Complex. Keep the hand piece at a 90° angle relative to the skin surface at 8-10 mm distance from it. Move in slow zigzag motions, covering the entire treatment area. Duration of Booster Infusion: 5-15 minutes.



WE COVER IT GLOW

THE BEST CHOICE FOR THE YOUNG & HEALTHY SKIN